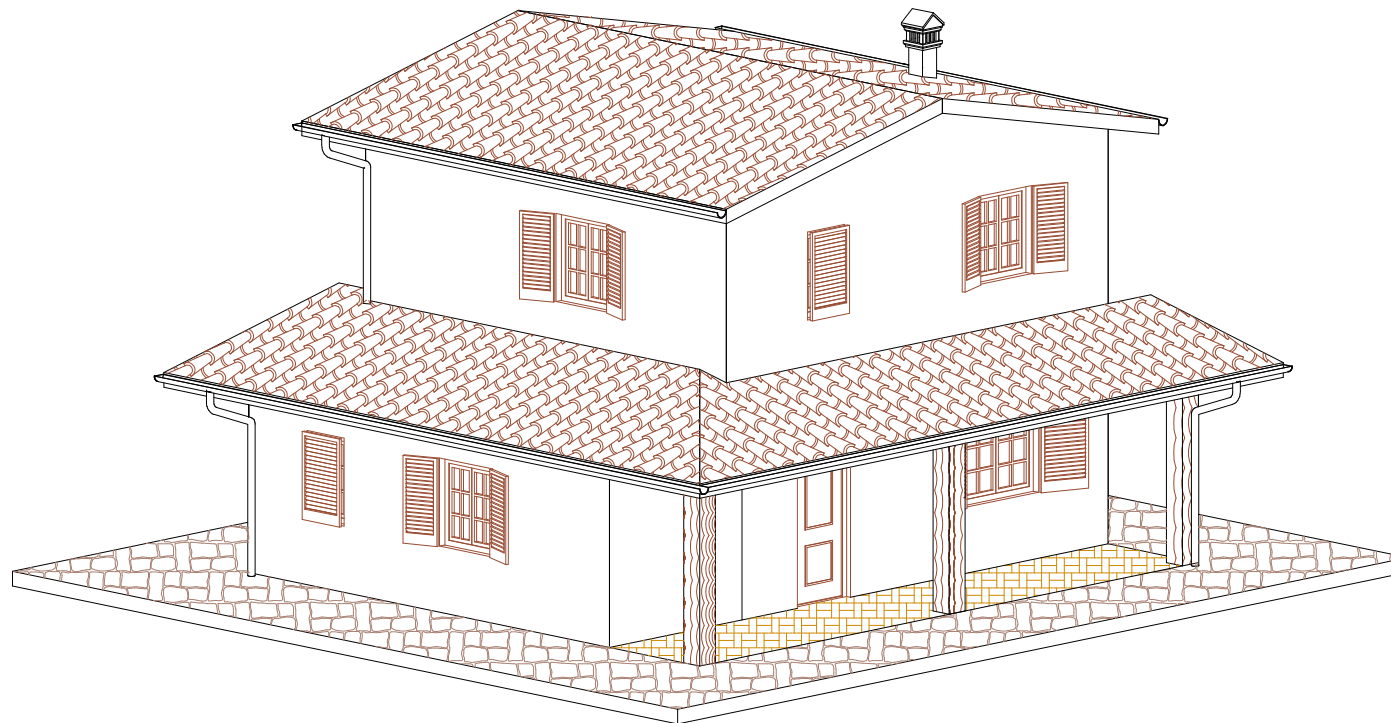


Casale Ornaro Alto 1

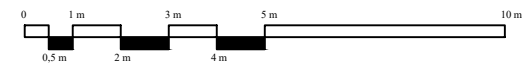
Comune di Torricella in Sabina

Provincia di Rieti (RI) - 02100



ASSONOMETRIA

scala 1:100



DIONISI DESIGN

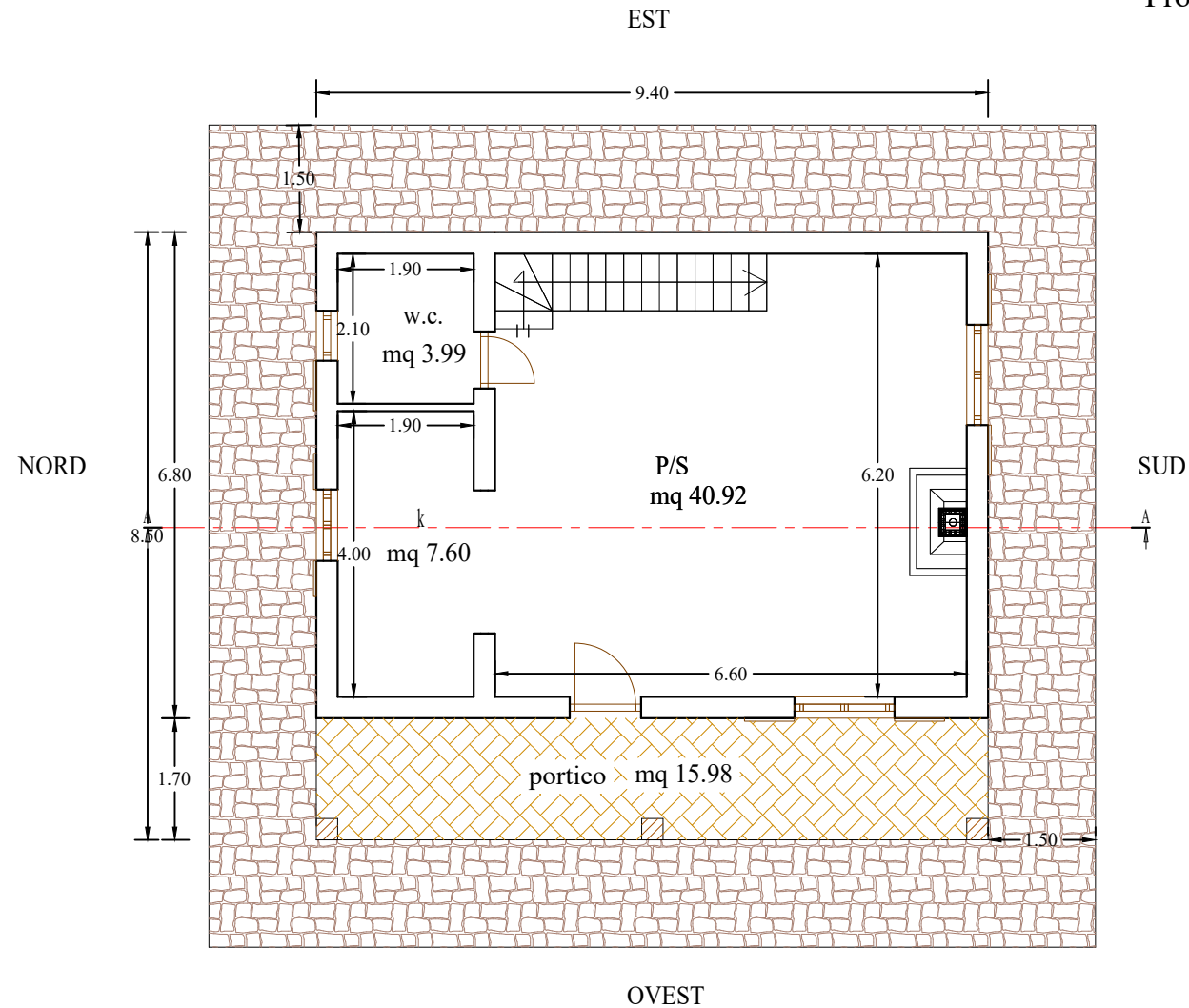
architectural department of
DIONISI PROPERTY

www.dionisiproperty.com

Casale Ornaro Alto 1

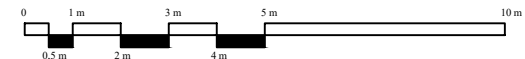
Comune di Torricella in Sabina

Provincia di Rieti (RI) - 02100



planimetria PIANO TERRA

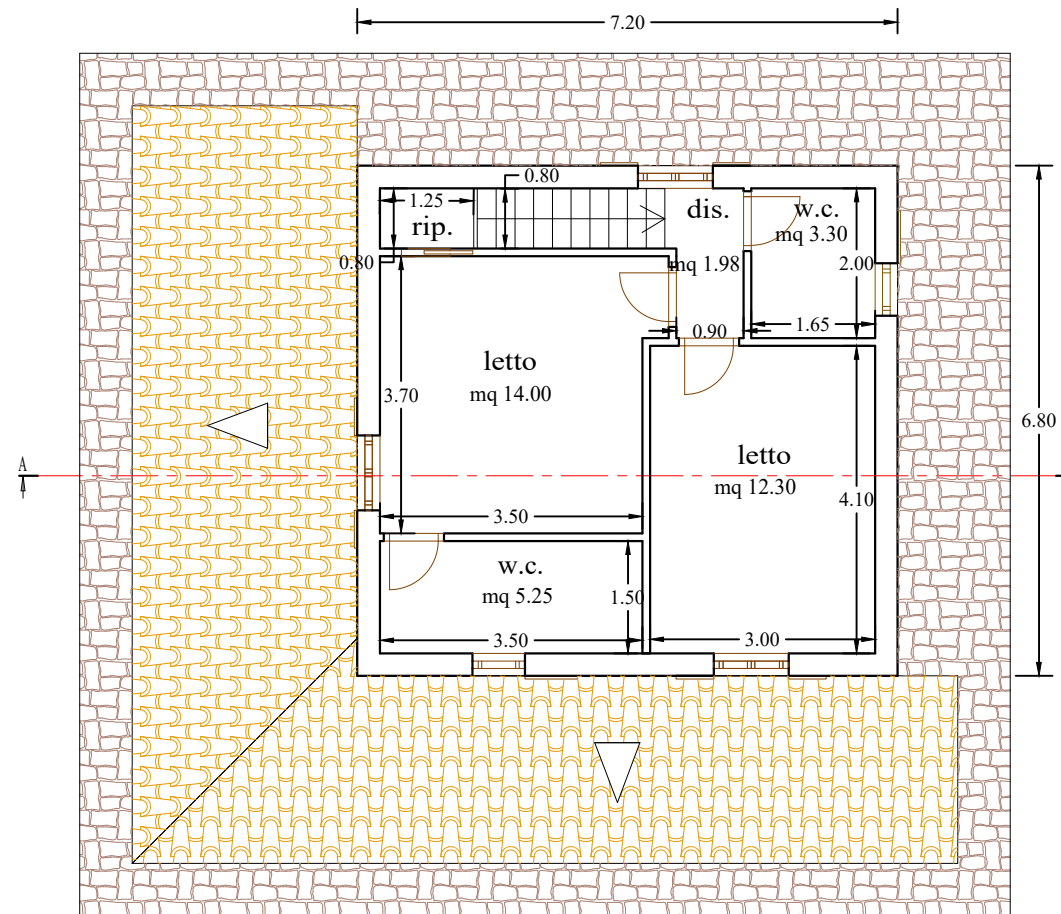
scala 1:100



Casale Ornaro Alto 1

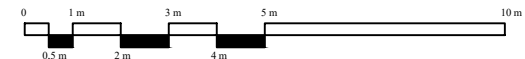
Comune di Torricella in Sabina

Provincia di Rieti (RI) - 02100



planimetria PIANO PRIMO

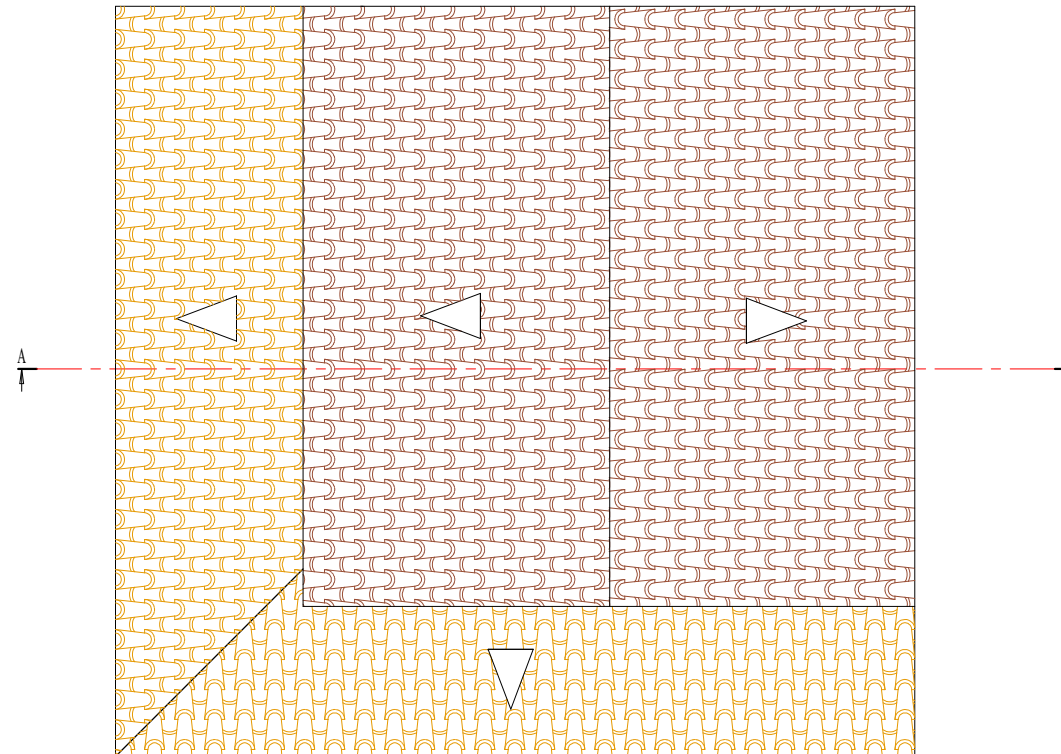
scala 1:100



Casale Ornaro Alto 1

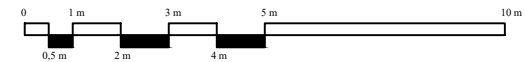
Comune di Torricella in Sabina

Provincia di Rieti (RI) - 02100



planimetria PIANO COPERTURA

scala 1:100



Casale Ornaro Alto 1

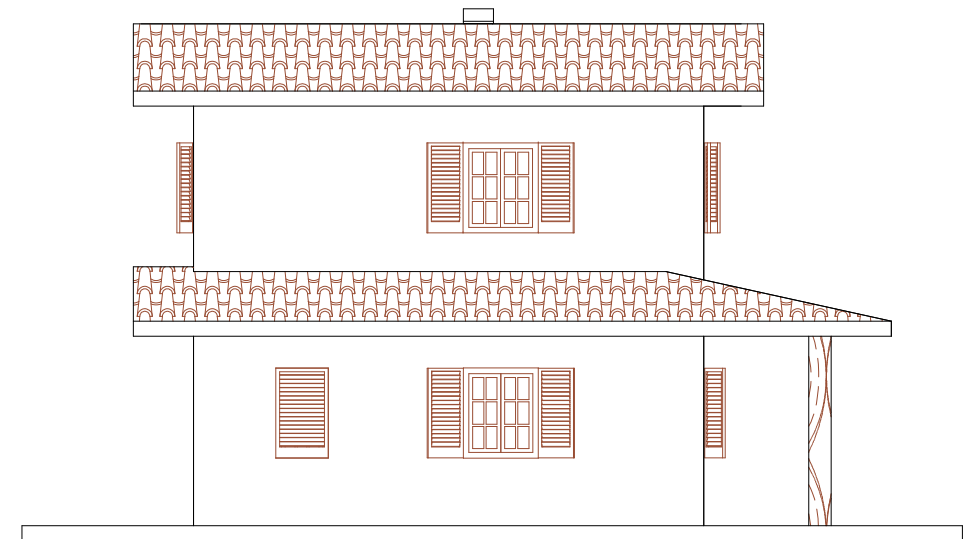
Comune di Torricella in Sabina

Provincia di Rieti (RI) - 02100

PROSPETTO OVEST

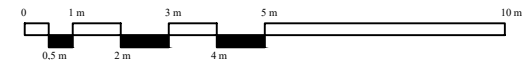


PROSPETTO NORD



prospetti NORD e OVEST

scala 1:100

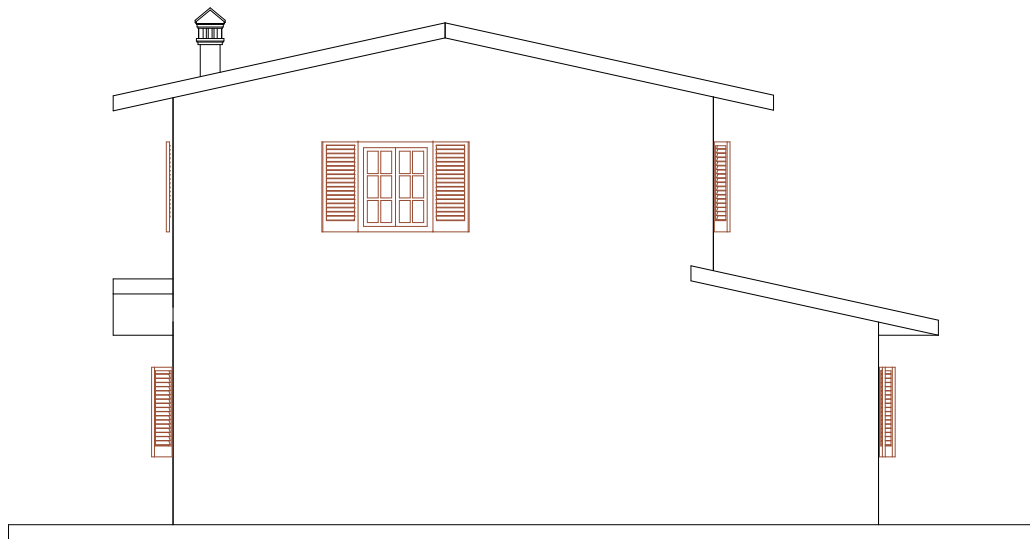


Casale Ornaro Alto 1

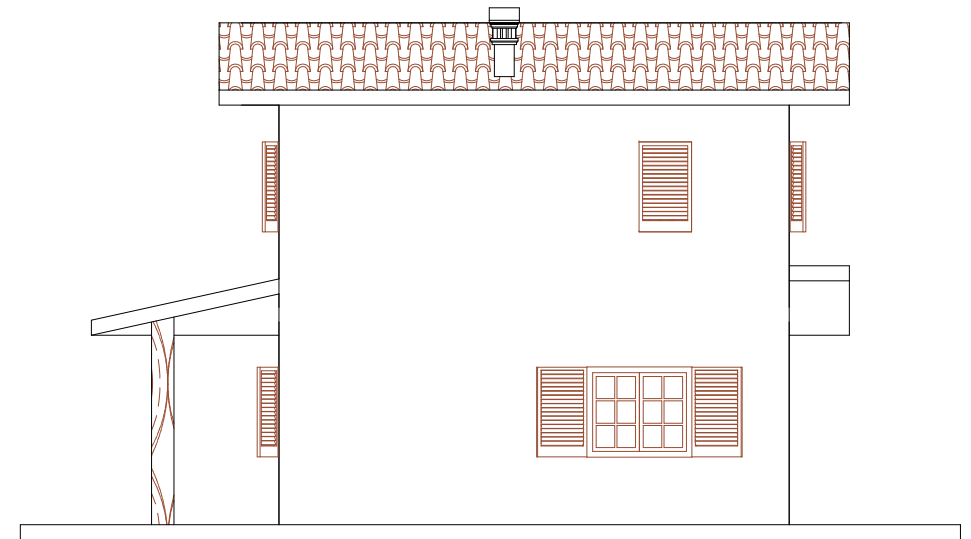
Comune di Torricella in Sabina

Provincia di Rieti (RI) - 02100

PROSPETTO EST

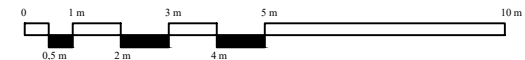


PROSPETTO SUD



prospetti SUD e EST

scala 1:100

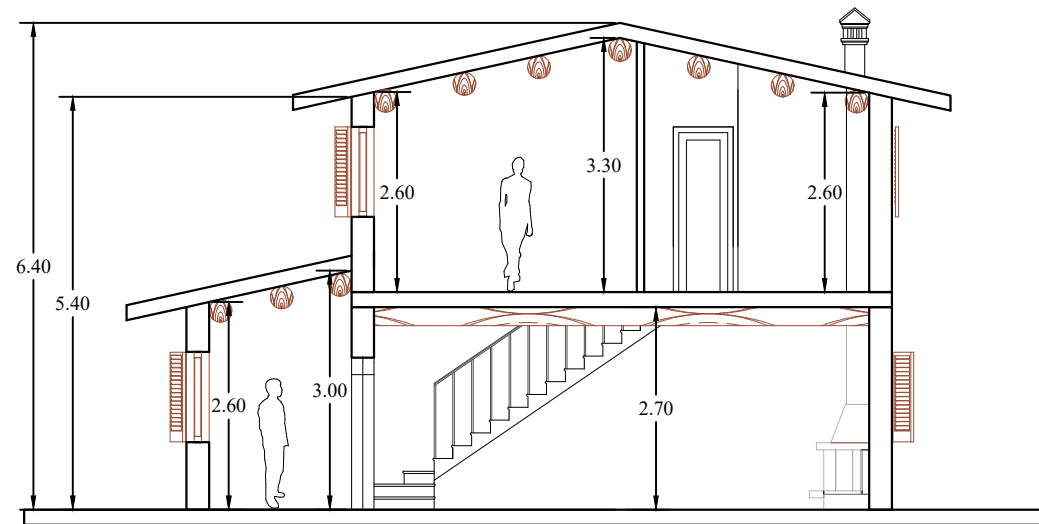


Casale Ornaro Alto 1

Comune di Torricella in Sabina

Provincia di Rieti (RI) - 02100

SEZIONE A-A



SEZIONE A-A

scala 1:100

